



812-750-8036



tara.hagan@sicpdc.org



www.sicpdc.org



405 W US Hwy 50, Versailles



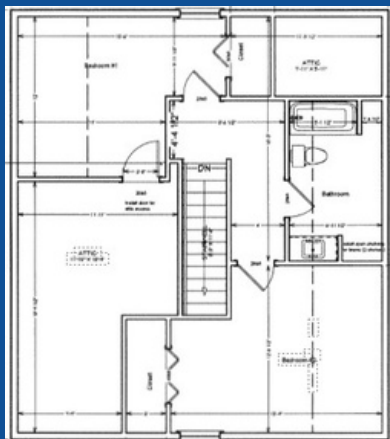
CURRENT PROPERTY

622 Marmot , Aurora, IN*

*use 603 4th St. for navigation



First Floor



Second Floor

NEW CONSTRUCTION

SICPDC works with local communities to build homes to sell to low-to moderate-income households. Properties are donated to SICPDC and homes are developed with funds from Indiana Housing & Community Development Authority. (IHCDA) Please visit our website for full details, including a Frequently Asked Questions section in the application packet.

Property Features



1,465 square feet



Laundry Room



All Appliances included



Walk-in closet in master bedroom



Open Concept Floor Plan



3 Bedrooms / 2.5 Bathrooms



SICPDC
Southeastern Indiana
Community Preservation &
Development Corporation

